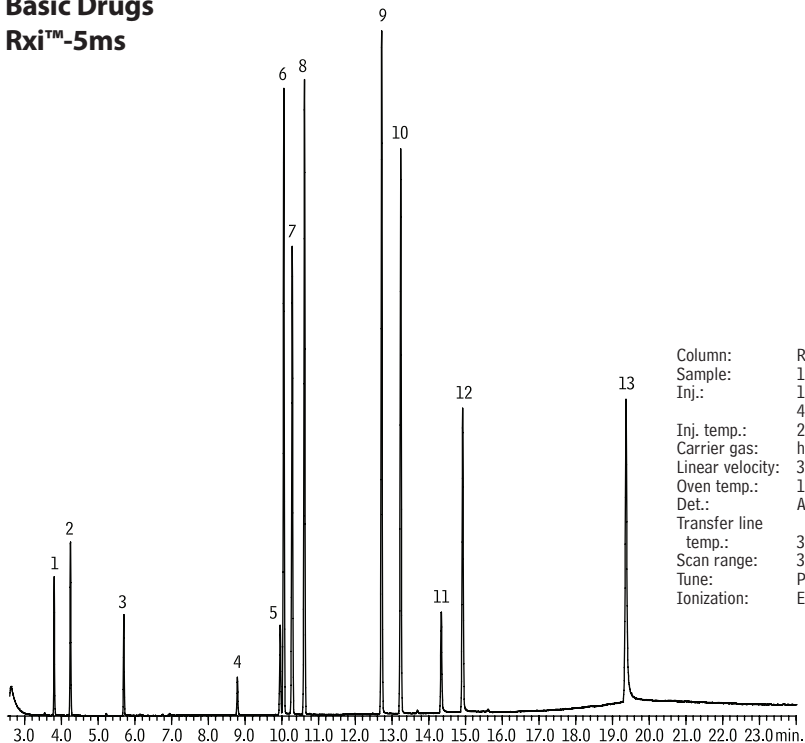


# Basic Drugs Rxi™-5ms



GC\_PH00814

1. amphetamine
2. methamphetamine
3. nicotine
4. cotinine
5. caffeine
6. benzphetamine
7. ketamine
8. phencyclidine
9. methadone
10. cocaine
11. codeine
12. scopolamine
13. alprazolam

Column: Rxi™-5ms 30m, 0.25mm ID, 0.25 $\mu$ m (cat.# 13423)  
Sample: 1000 $\mu$ g/mL each in methanol  
Inj.: 1.0 $\mu$ L split (50:1), 20 $\mu$ g each compound on column; Siltek® treated  
4mm gooseneck splitless inlet liner (cat # 20799-214.5)  
Inj. temp.: 250°C  
Carrier gas: helium  
Linear velocity: 30cm/sec., constant pressure  
Oven temp.: 100°C to 220°C @ 15°C/min., to 330°C @ 10°C/min. (hold 5 min.)  
Det.: Agilent 5973 MSD  
Transfer line temp.: 300°C  
Scan range: 35-550  
Tune: PFTBA  
Ionization: EI