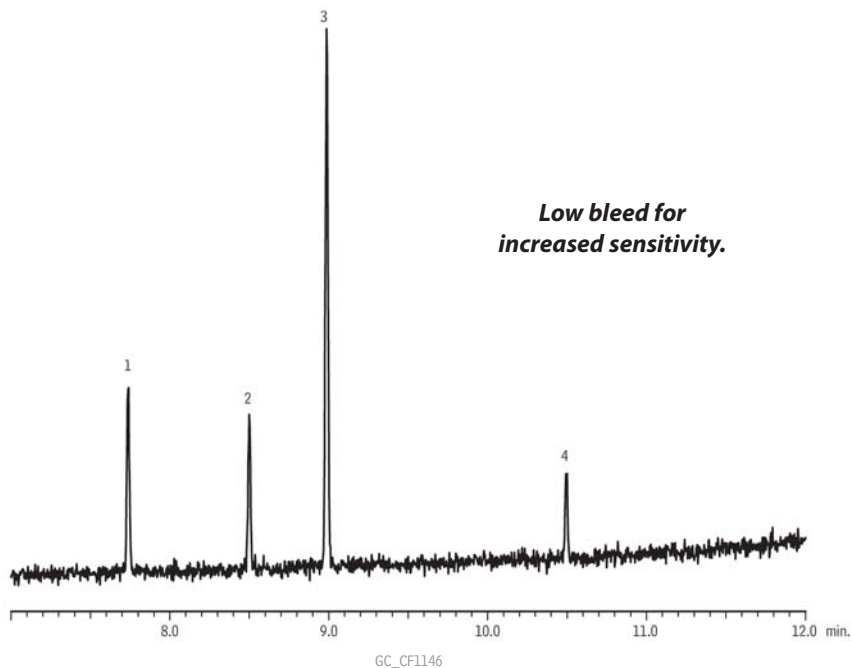


## Derivatized Cannabinoids (50 ng/mL) on Rxi®-5Sil MS



*Low bleed for  
increased sensitivity.*

Peaks	m/z 1	m/z 2	m/z 3
1. Cannabidiol	390	337	458
2. delta-9-THC	371	386	343
3. Cannabinol	367	382	310
4. THC-COOH; THCA	371	473	398

**Column** Rxi®-5Sil MS, 30 m, 0.25 mm ID, 0.25  $\mu$ m (cat.# 13623)  
**Sample**  
Diluent: Ethyl acetate  
Conc.: 50 ng/mL TMS derivatives  
**Injection**  
Inj. Vol.: 1  $\mu$ L splitless (hold 1 min.)  
Liner: 3.5mm Gooseneck Splitless w/Wool (cat.# 22286-200.1)  
Inj. Temp.: 250 °C  
Purge Flow: 21.4 mL/min.  
**Oven**  
Oven Temp: 150 °C to 330 °C at 15 °C/min. (hold 3 min.)  
Carrier Gas: He, constant linear velocity  
Linear Velocity: 40 cm/sec., 13.8 psi, 95.1kPa @ 150 °C  
**Detector**  
Mode: MS  
SIM Program: 390, 337, 458, 367, 382, 310, 371, 386, 343, 473, 398 m/z  
Transfer Line  
Temp.: 280 °C  
Analyzer Type: Quadrupole  
Source Temp.: 200 °C  
Solvent Delay  
Time: 4 min.  
Tune Type: PFTBA  
Ionization  
Mode: EI  
**Instrument** Shimadzu 2010 GC & QP2010+ MS