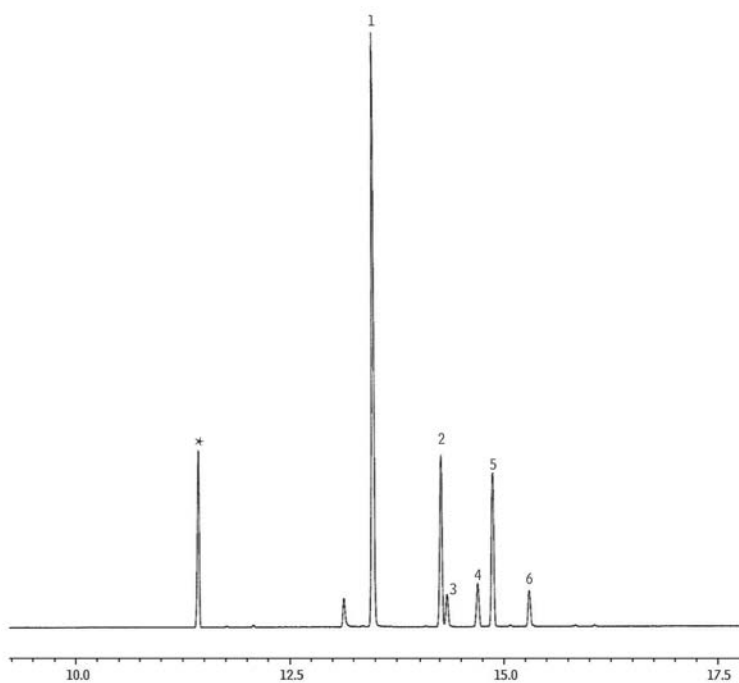


Extracted Opiates from Blood on Rxi®-5Sil MS



GC_CF1150

Peaks

1. Hydrocodone
 2. Codeine
 3. Oxycodone
 4. Hydromorphone
 5. 6-Monoacetylmorphine
 6. Morphine
- * Matrix

Column Rxi®-5Sil MS, 30 m, 0.25 mm ID, 0.25 μ m (cat.# 13623)

Sample

Diluent: Ethyl acetate
Conc.: 100 ng/mL propionic anhydride derivatives

Injection

Inj. Vol.: 1 μ L splitless (hold 1 min.)
Liner: Gooseneck Splitless (4mm) w/Wool (cat.# 22405)
Inj. Temp.: 250 °C
Purge Flow: 100 mL/min.

Oven

Oven Temp: 65 °C (hold 1 min.) to 315 °C at 15 °C/min.

Carrier Gas

Carrier Gas: He, constant flow

Flow Rate: 1 mL/min.

Linear Velocity: 35 cm/sec. @ 65 °C

Detector

Detector: MS

Mode: SIM

Transfer Line

Temp.: 250 °C

Analyzer Type: Quadrupole

Solvent Delay

Time: 7 min.

Tune Type: PFTBA

Ionization Mode: EI

Notes

Opiates were spiked into a blood sample and extracted by SPE,

then derivatized with propionic anhydride.

Acknowledgement Data courtesy of Miami Dade County Medical Examiner Department

Restek Corporation 110 Benner Circle Bellefonte, PA 16823
814-353-1300 • 800-356-1688 • Fax: 814-353-1309 • www.restek.com