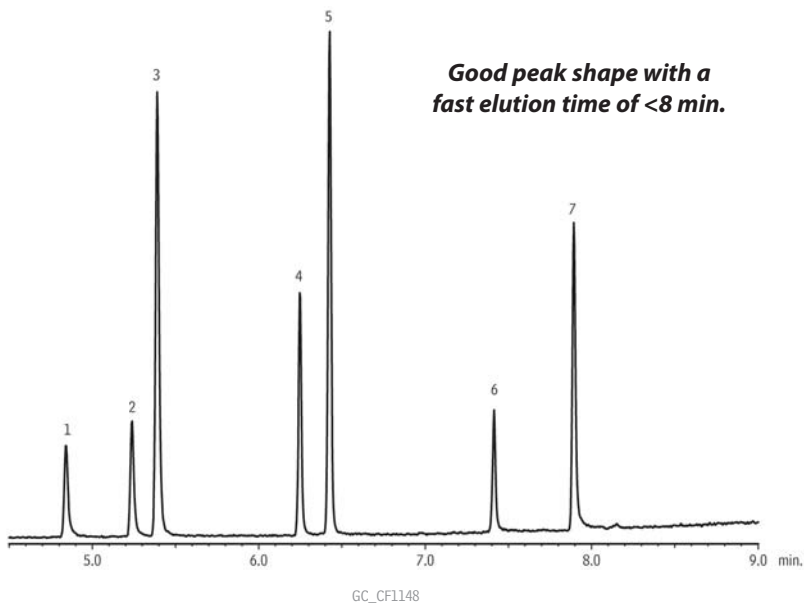


## Benzodiazepines (15 µg/mL) on Rxi®-5Sil MS



*Good peak shape with a  
fast elution time of <8 min.*

### Peaks

1. Oxazepam
2. Lorazepam
3. Diazepam
4. Flunitrazepam
5. Prazepam
6. Clonazepam
7. Alprazolam

### Column

Rxi®-5Sil MS, 30 m, 0.25 mm ID, 0.25 µm (cat.# 13623)

### Sample

Diluent: Butyl chloride  
Conc.: 15 µg/mL

### Injection

Inj. Vol.: 1 µL splitless (hold 1 min.)  
Liner: 3.5mm Gooseneck Splitless w/Wool (cat.# 22286-200.1)  
Inj. Temp.: 280 °C  
Purge Flow: 32.2 mL/min. (20:1 split)

### Oven

Oven Temp: 200 °C to 330 °C at 15 °C/min. (hold 3 min.)

### Carrier Gas

He, constant linear velocity

Linear Velocity: 50 cm/sec., 23.7 psi, 163.4kPa @ 200 °C

### Detector

MS

Mode: Scan

Transfer Line

Temp.: 280 °C

Analyzer Type: Quadrupole

Source Temp.: 200 °C

Electron Energy: 70 eV

Solvent Delay

Time: 4 min.

Tune Type: PFTBA

Ionization Mode: EI

Scan Range: 50-350 amu

Scan Rate: 5 scans/sec.

Instrument

Shimadzu 2010 GC & QP2010+ MS