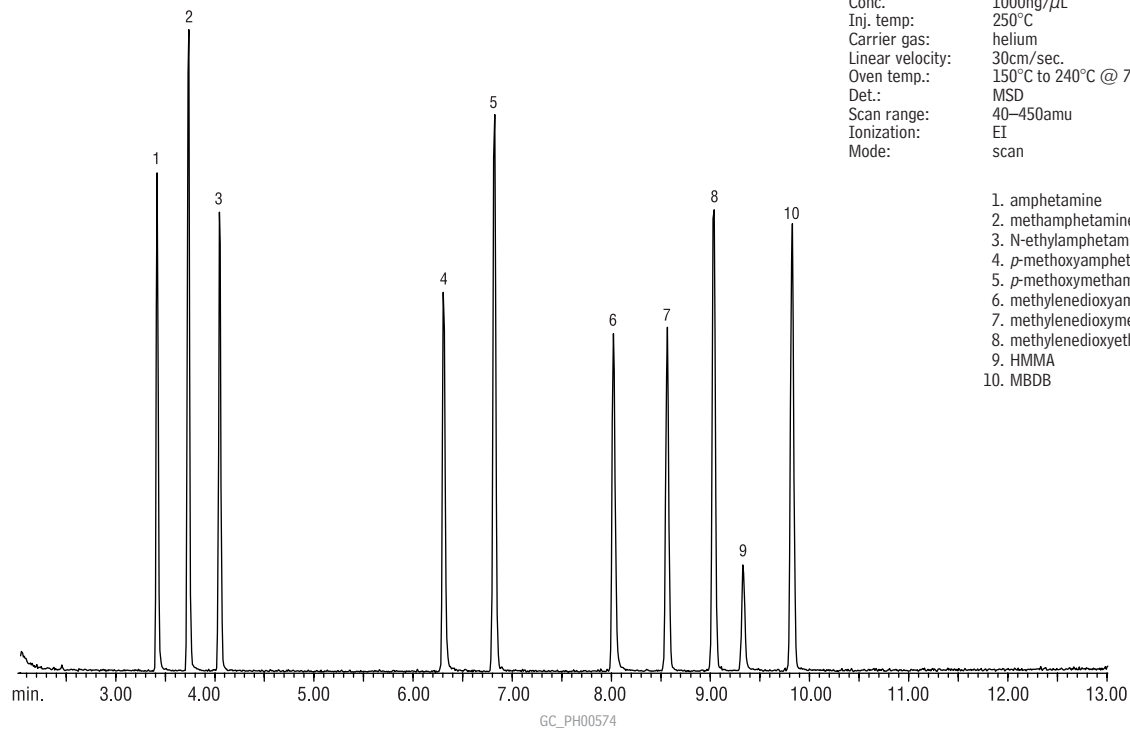


Underivatized Sympathomimetic Amines (Basic Drugs) Rtx®-35 Amine



Rtx®-35 Amine 30m, 0.25mm ID, 0.50 μ m (cat.# 11338)
1.0 μ L split injection of underivatized sympathomimetic amines
Conc. 1000ng/ μ L
Inj. temp: 250°C
Carrier gas: helium
Linear velocity: 30cm/sec.
Oven temp.: 150°C to 240°C @ 7°C/min.
Det.: MSD
Scan range: 40–450amu
Ionization: EI
Mode: scan

1. amphetamine
2. methamphetamine
3. N-ethylamphetamine
4. *p*-methoxyamphetamine (PMA)
5. *p*-methoxymethamphetamine (PMMA)
6. methylenedioxyamphetamine (MDA)
7. methylenedioxyethamphetamine (MDMA)
8. methylenedioxyethylamphetamine (MDEA)
9. HMMA
10. MBDB