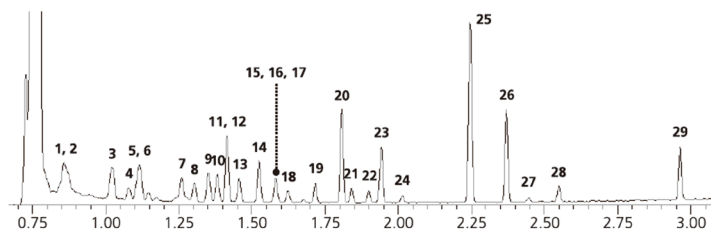


## EV11 水中の揮発性有機化合物 Volatile Organic Compounds in Water SH-Rxi™-624Sil MS

20 m, 0.18 mm ID, 1.00 µm (P/N: 227-36075-01)

低ブリード



### Peaks

1. Vinyl chloride-d3 (STD)
2. Vinyl chloride
3. 1,1-dichloroethylene
4. Dichloromethane
5. Methyl-t-butyl ether (MTBE)
6. Trans-1,2-dichloroethylene
7. Cis-1,2-dichloroethylene
8. Trichloromethane
9. 1,1,1-trichloroethane
10. Carbon tetrachloride
11. 1,2-dichloroethane
12. Benzene
13. Fluorobenzene (STD)
14. Trichloroethylene
15. 1,4-dioxane-d8 (STD)
16. 1,2-dichloropropane
17. 1,4-dioxane
18. Bromodichloromethane
19. Cis-1,3-dichloropropene
20. Toluene
21. Trans-1,3-dichloropropene
22. 1,1,2-trichloroethane
23. Tetrachloroethylene
24. Dibromochloromethane
25. m,p-xylene
26. o-xylene
27. Bromoform
28. 4-bromofluorobenzene
29. 1,4-dichlorobenzene

### Conditions

Instrument:

Column: GCMS-TQ8030 + HS-20 Loop  
SH-Rxi™-624Sil MS, 20 m, 0.18 mm ID,  
1.00 µm (P/N: 227-36075-01)

Loop volume: 1 mL

Sample Equilibration: 70 °C for 30 min

Vial pressurization: 0.5 min, 50 kPa,

equilibration 0.05 min

Needle Flush: 2 min

Sample Pathway Temp: 200 °C

Transfer Line Temp: 200 °C

Inj:

Oven Temp:

Carrier Gas:

Detector:

Split (split ratio 30:1)

70 °C, 40 °C/min to 220 °C (hold 0.5 min)

He, constant linear velocity mode, 50 cm/sec

MS: SIM

MS/MS: MRM

Event (loop) time: 0.15 sec

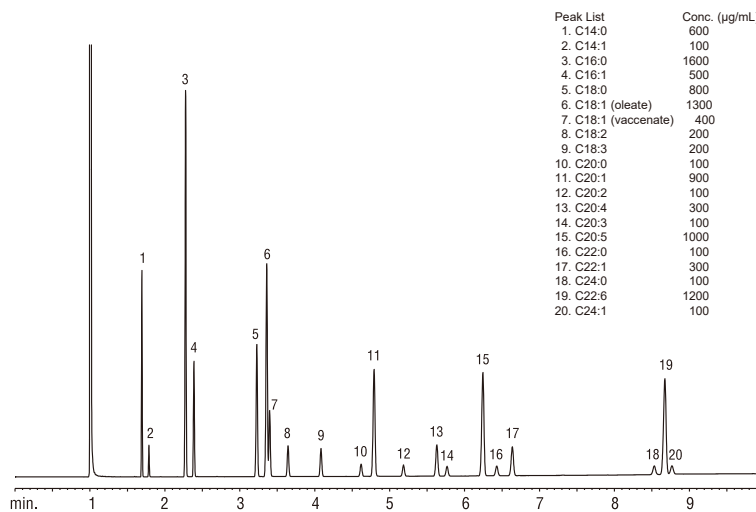
Source Temp: 200 °C

Interface Temp: 230 °C



## EV12 マリンオイル標準品 FAMES (Marine Oil Standard) SH-FAMEWAX™

30 m, 0.32 mm ID, 0.25 µm (P/N: 227-36270-01)



Peak List	Conc. (µg/mL)
1. C14:0	600
2. C14:1	100
3. C16:0	1600
4. C16:1	500
5. C18:0	800
6. C18:1 (oleate)	1300
7. C18:1 (vaccenate)	400
8. C18:2	200
9. C18:3	200
10. C20:0	100
11. C20:1	900
12. C20:2	100
13. C20:4	300
14. C20:3	100
15. C20:5	1000
16. C22:0	100
17. C22:1	300
18. C24:0	100
19. C22:6	1200
20. C24:1	100

### Conditions

Column: SH-FAMEWAX™, 30 m, 0.32 mm ID, 0.25 µm (P/N: 227-36270-01)

Inj. Vol.: 1 µL split (split ratio: 100:1)

Conc.: 10,000 µg/mL in isooctane (total FAMES)

Inj. Temp: 250 °C

Carrier Gas: Hydrogen, constant flow rate 3 mL/min

Oven Temp: 195 - 240 °C at 5 °C/min (hold 1 min)

Detector Temp: 275 °C

