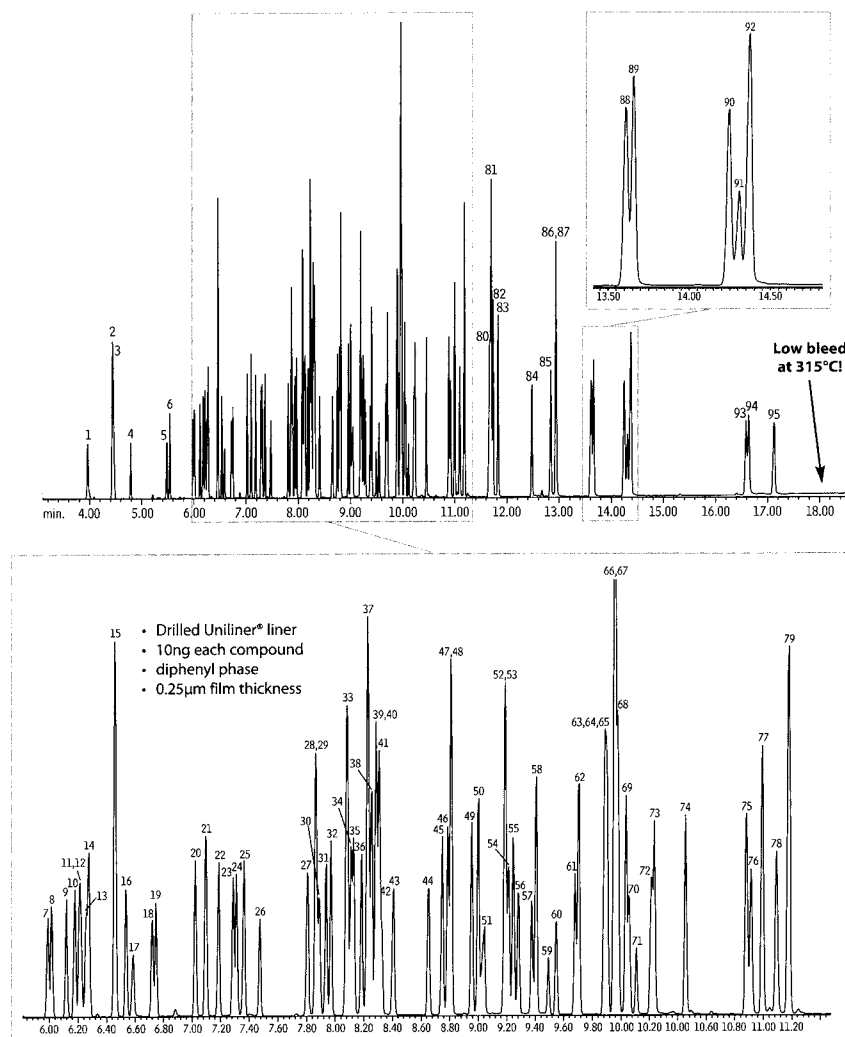


EV09 揮発性有機化合物 Semivolatiles SH-Rxi™-5MS

30 m, 0.25 mm ID, 0.25 μm (P/N: 221-75940-30)

低ブリード



1. isophorone
2. 2-nitro-*m*-xyliene (SS)
3. naphthalene
4. dichlorvos (DDVP)
5. hexachlorocyclopentadiene
6. EPTC
7. mevinphos
8. butylate
9. vernolate
10. dimethyl phthalate
11. pebulate
12. etridiazole (Terrazole®)
13. 2,6-dinitrotoluene
14. acenaphthylene
15. acenaphthene-d10 (IS)
16. chlorneb
17. tebuthiuron
18. 2,4-dinitrotoluene
19. molinate
20. diethyl phthalate
21. fluorene
22. propachlor
23. ethoprop (ethoprophos)
24. cyroate
25. chlorpropham
26. trifluralin
27. atraton
28. hexachlorobenzene
29. prometon
30. simazine
31. atrazine
32. propazine
33. pentachlorophenol
34. terbufos
35. pronamide (propyzamide)
36. glazicon
37. phenanthrene-d10 (IS)
38. phenanthrene
39. disulfoton
40. methyl paraoxon
41. anthracene
42. terbacil
43. chlorothalonil
44. metribuzin
45. simetryn
46. ametryn
47. alachlor
48. prometryn
49. terbutryn
50. di-*n*-butyl phthalate
51. bromacil
52. cyanazine (Bladex)
53. metolachlor
54. chlorpyrifos (Dursban®)
55. triadimefon
56. Dacthal® (DCPA)
57. MGK-264 (isomer A)
58. diphenamid
59. MGK-264 (isomer B)
60. merphos
61. heptachlor epoxide
62. fluoranthene
63. stirofos
64. disulfoton sulfone
65. butachlor
66. pyrene-d10 (SS)
67. fenamiphos
68. pyrene
69. napropamide (Devrinol®)
70. trans-nonachlor
71. merphos oxide
72. tricyclazole (Beam)
73. carboxin
74. chlorobenzilate
75. benzyl butyl phthalate
76. norflurazon
77. bis(2-ethylhexyl) adipate
78. hexazinone (Velpar®)
79. triphenylphosphate (SS)
80. benzo(a)anthracene
81. chrysene-d12 (IS)
82. chrysene
83. bis(2-ethylhexyl) phthalate
84. fenarimol
85. *cis*-permethrin
86. *trans*-permethrin
87. di-*n*-octyl phthalate
88. benzo(b)fluoranthene
89. benzo(k)fluoranthene
90. benzo(a)pyrene
91. fluridone (Sonar®)
92. perylene-d12 (SS)
93. indeno(1,2,3-*cd*)pyrene
94. dibenzo(a,h)anthracene
95. benzo(ghi)perylene

- Drilled Uniliner® liner
- 10ng each compound
- diphenyl phase
- 0.25μm film thickness

Column: SH-Rxi™-5MS, 30m, 0.25mm ID, 0.25μm (cat.# 221-75940-30)
 Inj.: 1.0μL, pulsed splitless injection: 50psi (0.3 min.), 80mL/min. (0.15 min.), gas saver 15mL/min. (1 min.), 4mm Drilled Uniliner® inlet liner, hole near bottom (cat.# 20771)
 Inj. temp.: 250°C
 Carrier gas: helium, constant flow
 Flow rate: 1.2mL/min.
 Oven temp.: 90°C (1 min.) to 270°C @ 20°C/min., to 315°C @ 6°C/min.
 Det.: MS
 Interface line temp.: 280°C
 Scan range: 35-550amu
 Solvent delay: 3.00 min.
 Tune: DF1PP
 Ionization: EI