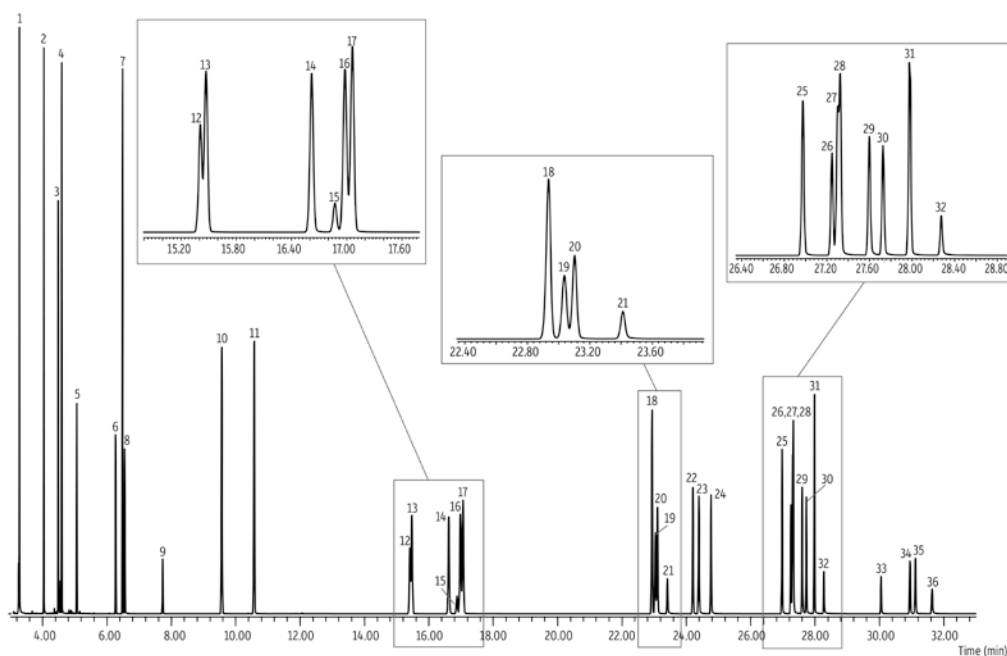


EV08 多環芳香族炭化水素 PAHs SH-Rxi™-PAH

40 m, 0.18 mm ID, 0.07 μm (P/N: 227-36073-01)

Peaks	Quant Ion (m/z)	SIM Group #	Peaks	Quant Ion (m/z)	SIM Group #
1. Naphthalene	128	1	19. Benzo[k]fluoranthene	252	4
2. Biphenyl	154	1	20. Benzo[j]fluoranthene	252	4
3. Acenaphthylene	152	1	21. Benzo[a]fluoranthene	252	4
4. Acenaphthene	153	1	22. Benzo[e]pyrene	252	4
5. Fluorene	165	1	23. Benzo[a]pyrene	252	4
6. Dibenzothiophene	184	2	24. Perylene	252	4
7. Phenanthrene	178	2	25. Dibenzo[a,j]anthracene	278	5
8. Anthracene	178	2	26. Dibenzo[a,c]anthracene	278	5
9. 4H-Cyclopenta[def]phenanthrene	190	2	27. Indeno[1,2,3-cd]pyrene	276	5
10. Fluoranthene	202	2	28. Dibenzo[a,h]anthracene	278	5
11. Pyrene	202	2	29. Benzo[b]chrysene	278	5
12. Benzo[ghi]fluoranthene	226	3	30. Picene	278	5
13. Benzo[c]phenanthrene	228	3	31. Benzo[ghi]perylene	276	5
14. Benz[a]anthracene	228	3	32. Anthanthrene	276	5
15. Cyclopenta[cd]pyrene	226	3	33. Dibenzo[b,k]fluoranthene	302	6
16. Triphenylene	228	3	34. Dibenzo[a,e]pyrene	302	6
17. Chrysene	228	3	35. Coronene	300	6
18. Benzo[b]fluoranthene	252	4			



Column SH-Rxi™-PAH, 40m, 0.18mm ID, 0.07μm (P/N:227-36073-01)
Diluent: Toluene
Conc.: 0.2 - 2 μg/mL (SRM 2260a PAH mix was diluted 5x in toluene)
Injection
 Inj. Vol.: 0.5 μL pulsed splitless (hold 0.58 min)
 Liner: Sky® 2 mm single taper w/wool (cat.# 23316.1)*
 Inj. Temp.: 275 °C
 Pulse Pressure: 80 psi (551.6kPa)
 Pulse Time: 0.6 min
 Purge Flow: 40 mL/min
Oven
 Oven Temp: 110 °C (hold 1 min) to 210 °C at 37 °C/min to 260 °C at 3 °C/min to 350 °C at 11 °C/min (hold 4.5 min)
Carrier Gas
 Flow Rate: 1.4 mL/min
Detector
 Mode: SIM

SIM Program:

Group	Start Time (min)	Ion(s) (m/z)	Dwell (ms)
1	3.00	128, 152, 153, 154, 165	40
2	5.50	178, 184, 190, 202	50
3	13.00	226, 228	100
4	20.00	252	200
5	26.00	276, 278	100
6	29.00	300, 302	150

Transfer Line Temp.: 350 °C
 Analyzer Type: Quadrupole
 Source Temp.: 350 °C
 Quad Temp.: 200 °C
 Solvent Delay Time: 3.00 min
 Tune Type: PFTBA
 Ionization Mode: EI

* Restek社製 SkyライナーはTopazライナーへ変更されました。
 Topazライナー P/N:23316をお選びください。

